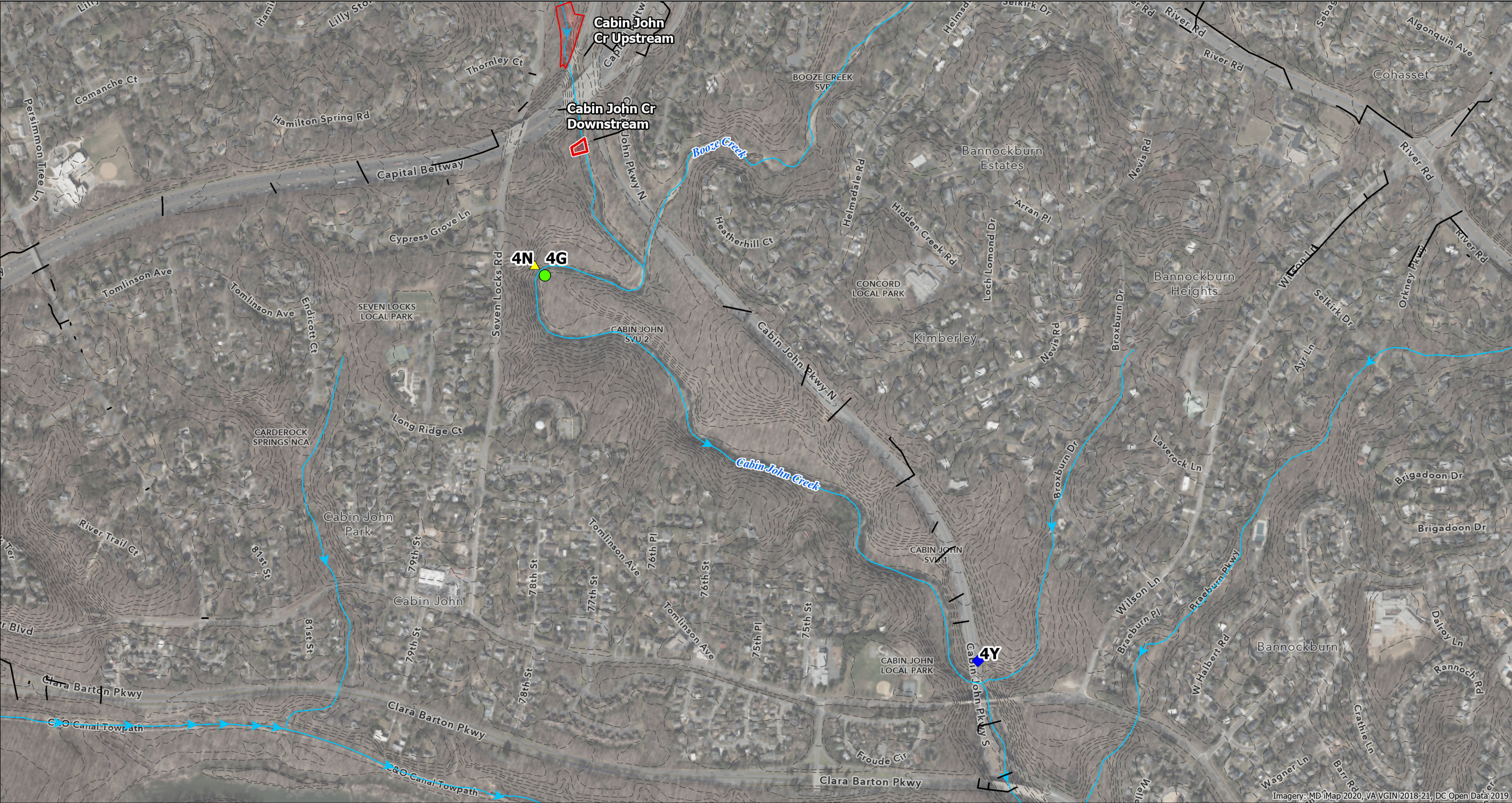


**APPENDIX D3**

**POTENTIAL DISCHARGE LOCATION MAP FOR PARK MITIGATION  
AREAS**





Imagery: MD iMap 2020, VA VGIN 2018-21, DC Open Data 2019

**I-495/I-270 Managed Lane Study  
Phase 1 South Water Quality Certification**

**Appendix D3:  
Potential Discharge Location Map for Park  
Mitigation Areas**

**Cabin John Cr Downstream:**

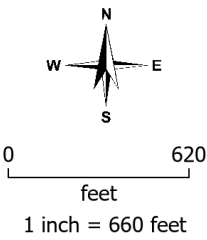
Sheet 1 of 7

Montgomery County, Maryland  
June 2022

- Park Mitigation LOD
- Discharge Location
- MCDEP
- NPDES Conveyance
- NHD/MDE Mapped Stream
- 10' Contour

**Stream Monitoring Site Name Key**

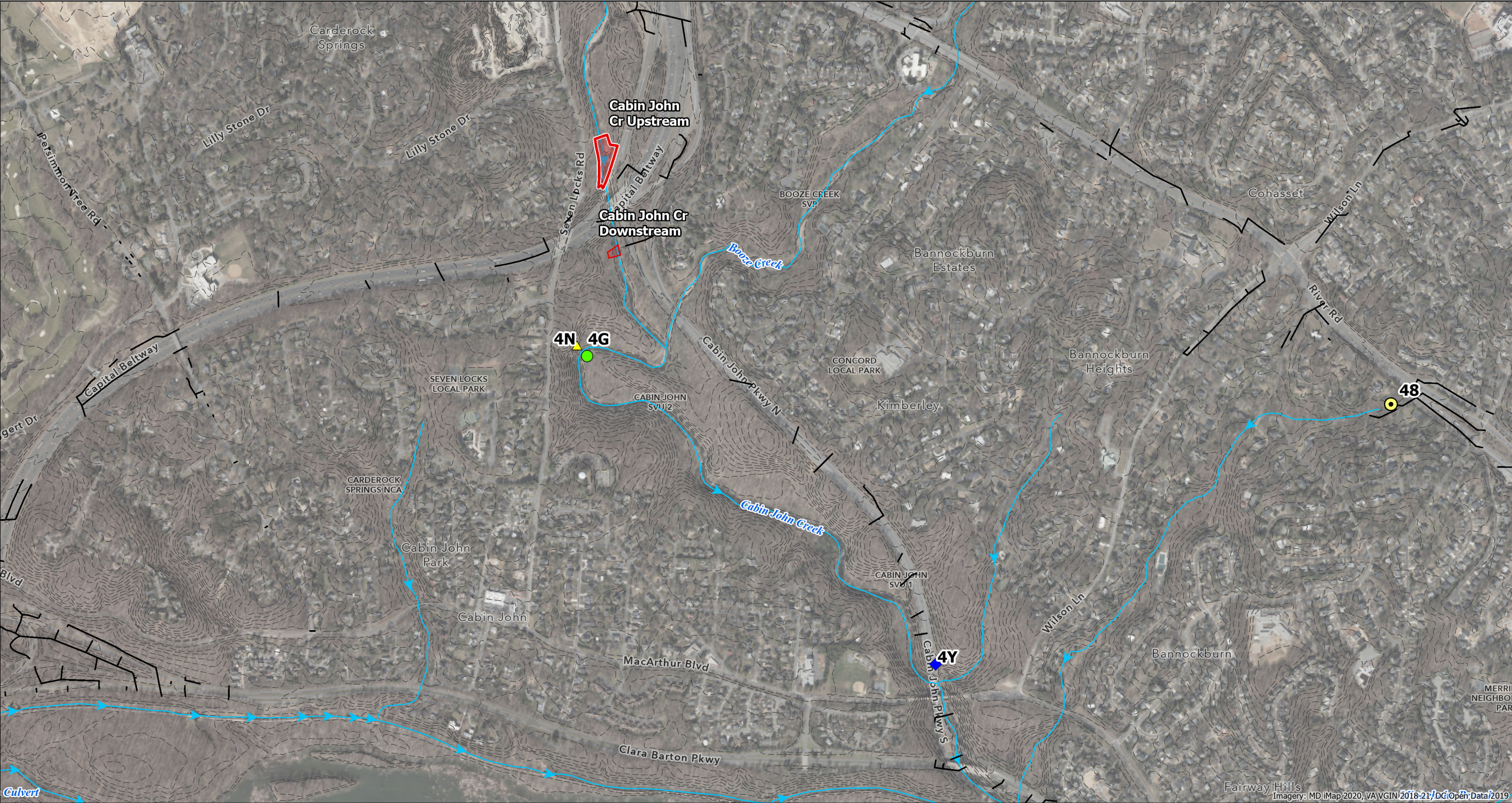
LABEL	STATION	Agency
4G	CJCJ306	MCDEP
4N	CJCJ306	MNCPPC
4Y	CBP_WQX-CJB0005	NWQMC



Map Center, NAD83  
38.9787°, -77.1543°







**I-495/I-270 Managed Lane Study  
Phase 1 South Water Quality Certification**

**Appendix D3:  
Potential Discharge Location Map for Park  
Mitigation Areas**

**Cabin John Cr Upstream:**

Sheet 2 of 7

Montgomery County, Maryland  
June 2022

- Park Mitigation  
LOD

Discharge Location

Stream Monitoring Site

MCDEP

MNCPPC
- Delineated Stream

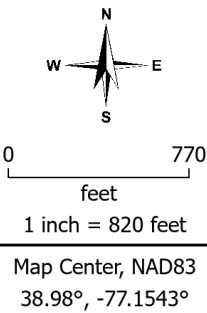
NPDES  
Conveyance

NHD/MDE  
Mapped Stream

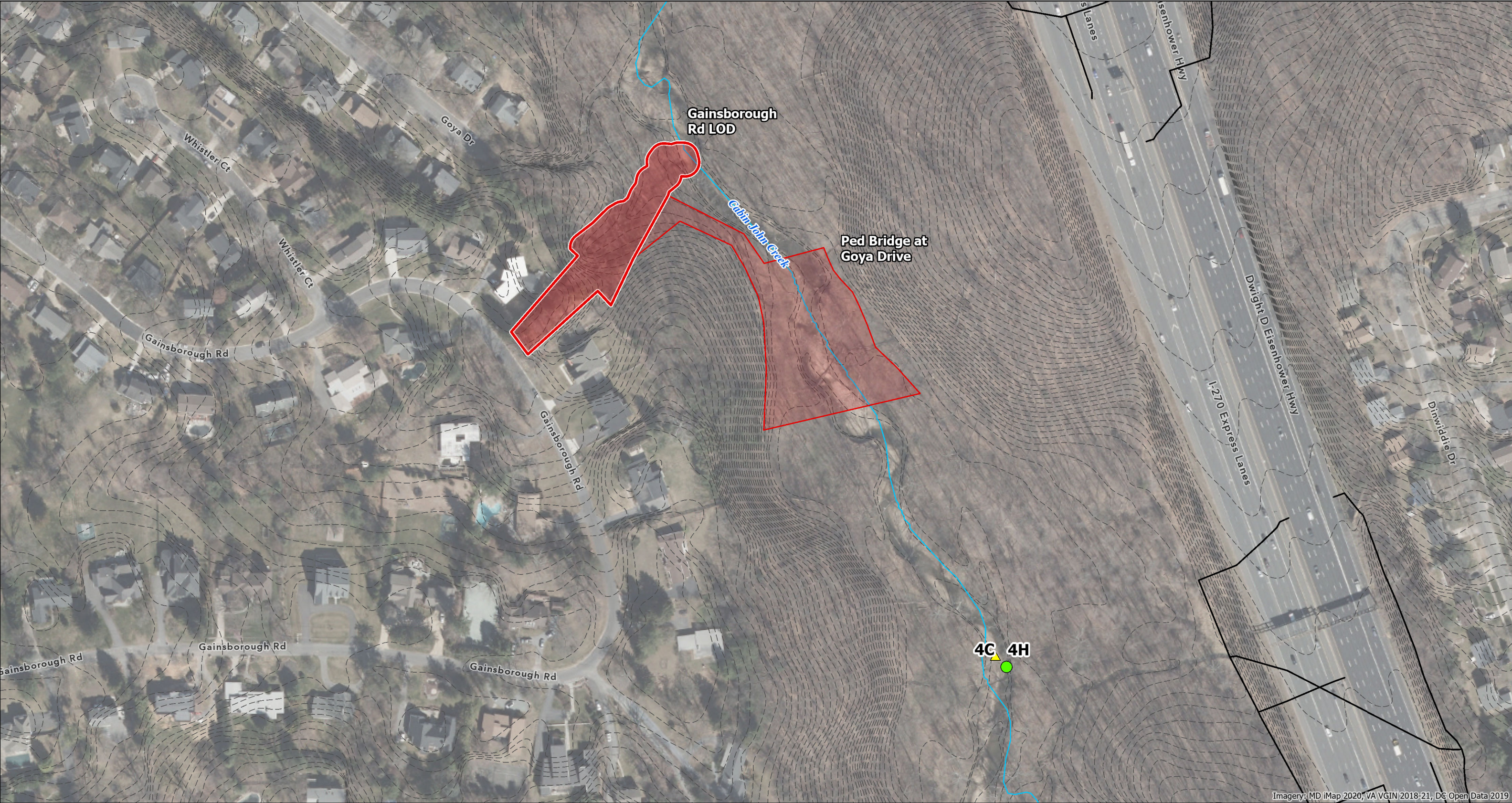
10' Contour

**Stream Monitoring Site Name Key**

LABEL	STATION	Agency
4G	CJCJ306	MCDEP
4N	CJCJ306	MNCPPC
4Y	CBP_WQX-CJB0005	NWQMC







Imagery: MD iMap 2020, VA VGIN 2018-21, DC Open Data 2019

**I-495/I-270 Managed Lane Study  
Phase 1 South Water Quality Certification**

**Appendix D3:  
Potential Discharge Location Map for Park  
Mitigation Areas**

**Gainsborough Rd LOD:**

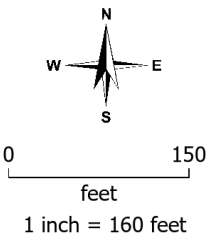
Sheet 3 of 7

Montgomery County, Maryland  
June 2022

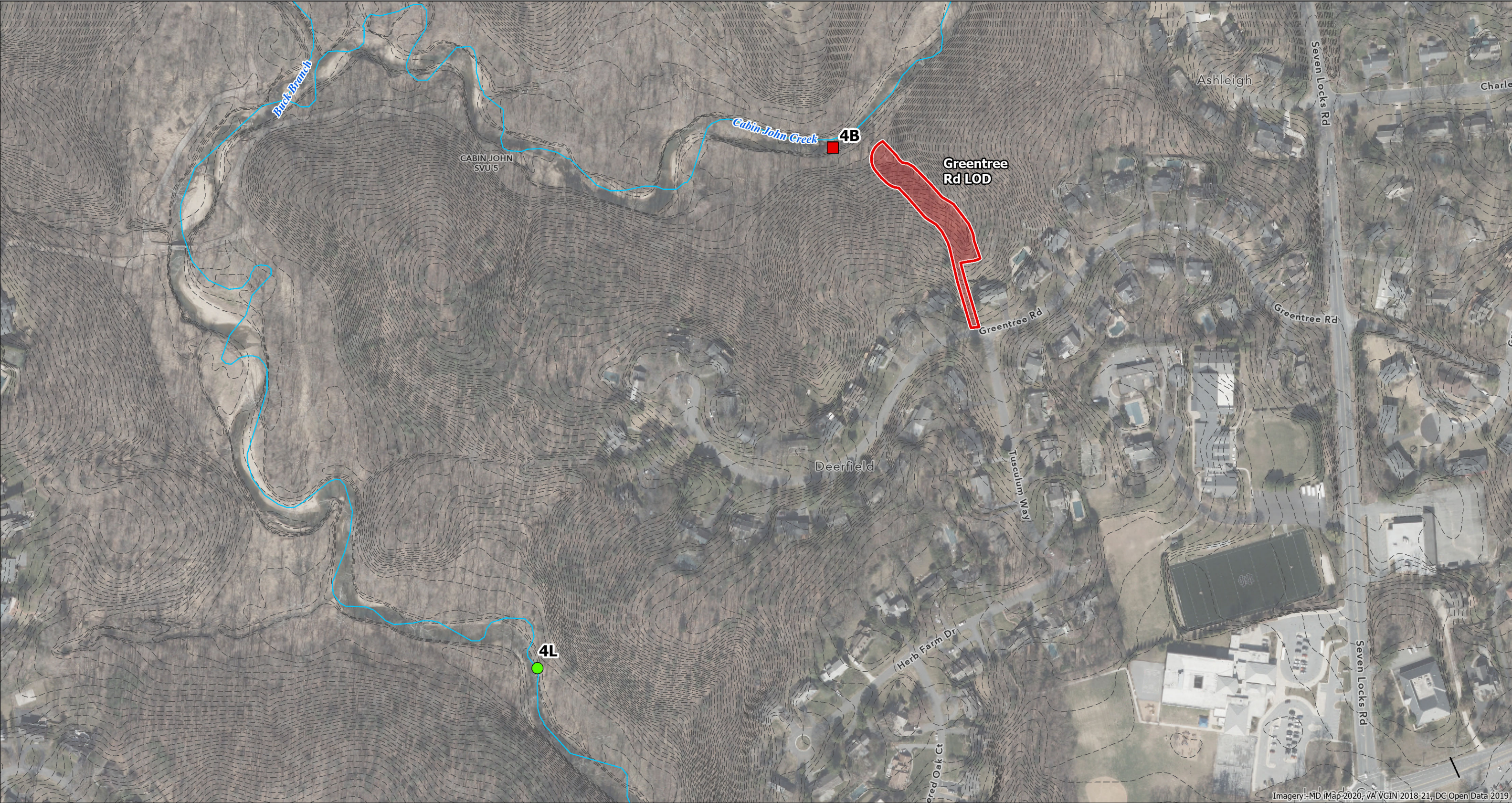
- Park Mitigation  
LOD
- Discharge Location
- NPDES  
Conveyance
- NHD/MDE  
Mapped Stream
- 2' Contour

**Stream Monitoring Site Name Key**

LABEL	STATION	Agency
4C	CJCJ202	MCDEP
4H	CJCJ202	MNCPPC







Imagery: MD iMap 2020; VA VGIN 2018-21; DC Open Data 2019

**I-495/I-270 Managed Lane Study  
Phase 1 South Water Quality Certification**

**Appendix D3:  
Potential Discharge Location Map for Park  
Mitigation Areas**

**Greentree Rd LOD:**

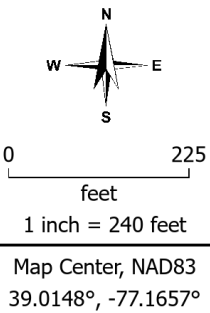
Sheet 4 of 7

Montgomery County, Maryland  
June 2022

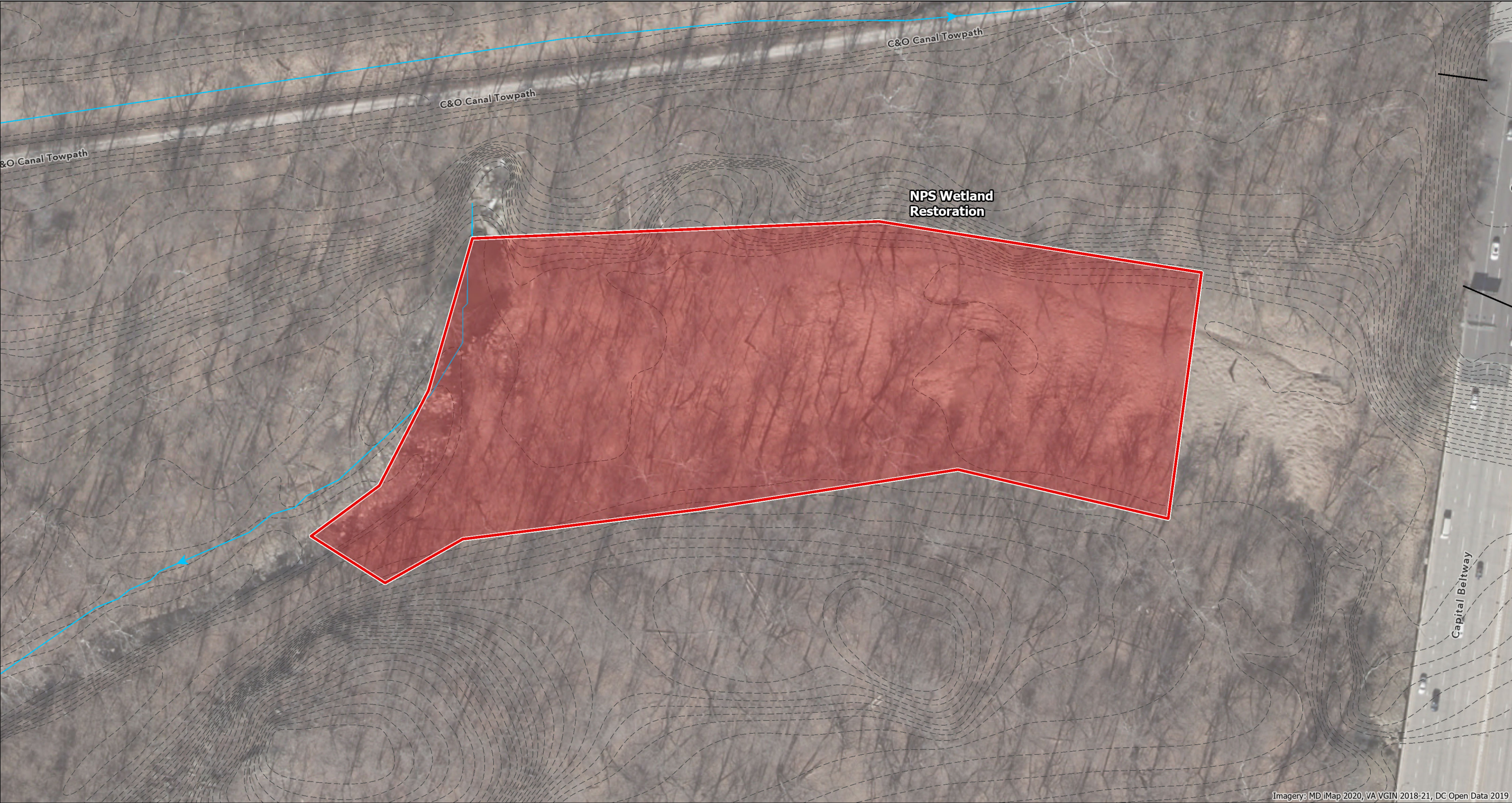
- Park Mitigation LOD
- Discharge Location
- NPDES Conveyance
- NHD/MDE Mapped Stream
- 2' Contour

**Stream Monitoring Site Name Key**

LABEL	STATION	Agency
4B	CABJ-208-B	MBSS
4L	CJCJ303	MNCPPC







Imagery: MD iMap 2020, VA VGIN 2018-21, DC Open Data 2019

**I-495/I-270 Managed Lane Study  
Phase 1 South Water Quality Certification**

**Appendix D3:  
Potential Discharge Location Map for Park  
Mitigation Areas**

**NPS Wetland Restoration:**

Sheet 5 of 7

Montgomery County, Maryland  
June 2022

- Park Mitigation  
LOD

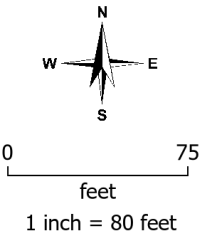
Discharge Location
- NPDES  
Conveyance

NHD/MDE  
Mapped Stream

2' Contour

**Stream Monitoring Site Name Key**

LABEL	STATION	Agency
	N/A	



Map Center, NAD83  
38.9711°, -77.1816°







Imagery: MD iMap 2020, VA VGIN 2018-21, DC Open Data 2019

**I-495/I-270 Managed Lane Study  
Phase 1 South Water Quality Certification**

**Appendix D3:  
Potential Discharge Location Map for Park  
Mitigation Areas**

**Ped Bridge at Goya Drive:**

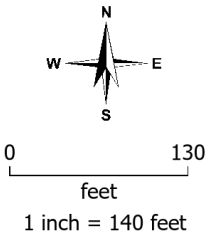
Sheet 6 of 7

Montgomery County, Maryland  
June 2022

- Park Mitigation LOD
- Discharge Location
- NPDES Conveyance
- NHD/MDE Mapped Stream
- 2' Contour

**Stream Monitoring Site Name Key**

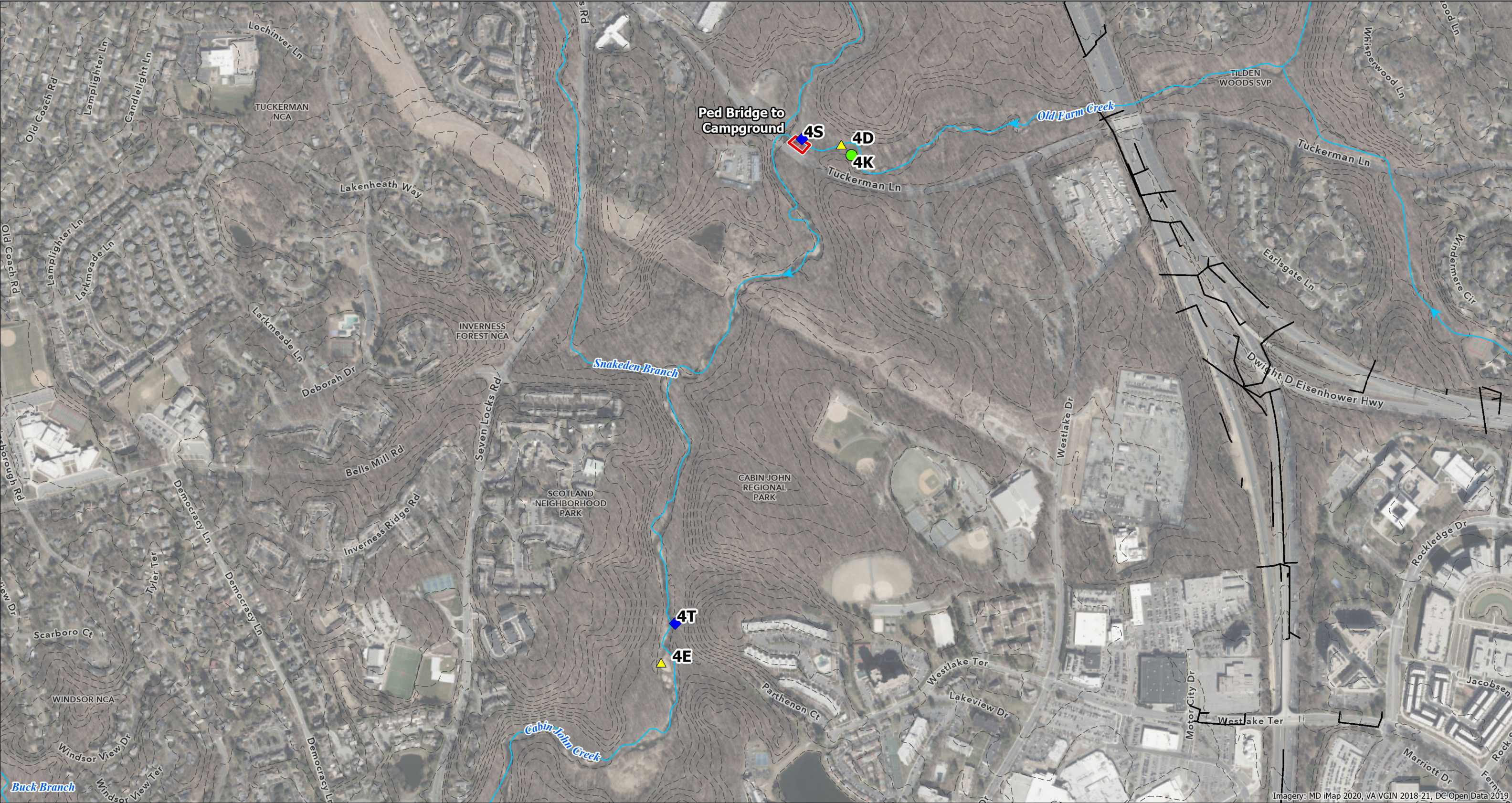
LABEL	STATION	Agency
4C	CJCJ202	MCDEP
4H	CJCJ202	MNCPPC



Map Center, NAD83  
39.0501°, -77.1546°







Imagery: MD iMap 2020, VA VGIN 2018-21, DC Open Data 2019

**I-495/I-270 Managed Lane Study  
Phase 1 South Water Quality Certification**

**Appendix D3:  
Potential Discharge Location Map for Park  
Mitigation Areas**

**Ped Bridge to Campground:**

Sheet 7 of 7

Montgomery County, Maryland  
June 2022

- Park Mitigation  
LOD

Discharge Location
- NPDES  
Conveyance

NHD/MDE  
Mapped Stream

10' Contour

**Stream Monitoring Site Name Key**

LABEL	STATION	Agency
4D	CJOF204	MCDEP
4E	CJCJ302	MCDEP
4K	CJOF204	MNCPPC
4S	MDE_FIELDSERVICES_WQX-ZEJ0001	NWQMC
4T	MDEDAT06_WQX-CJCJ302	NWQMC

