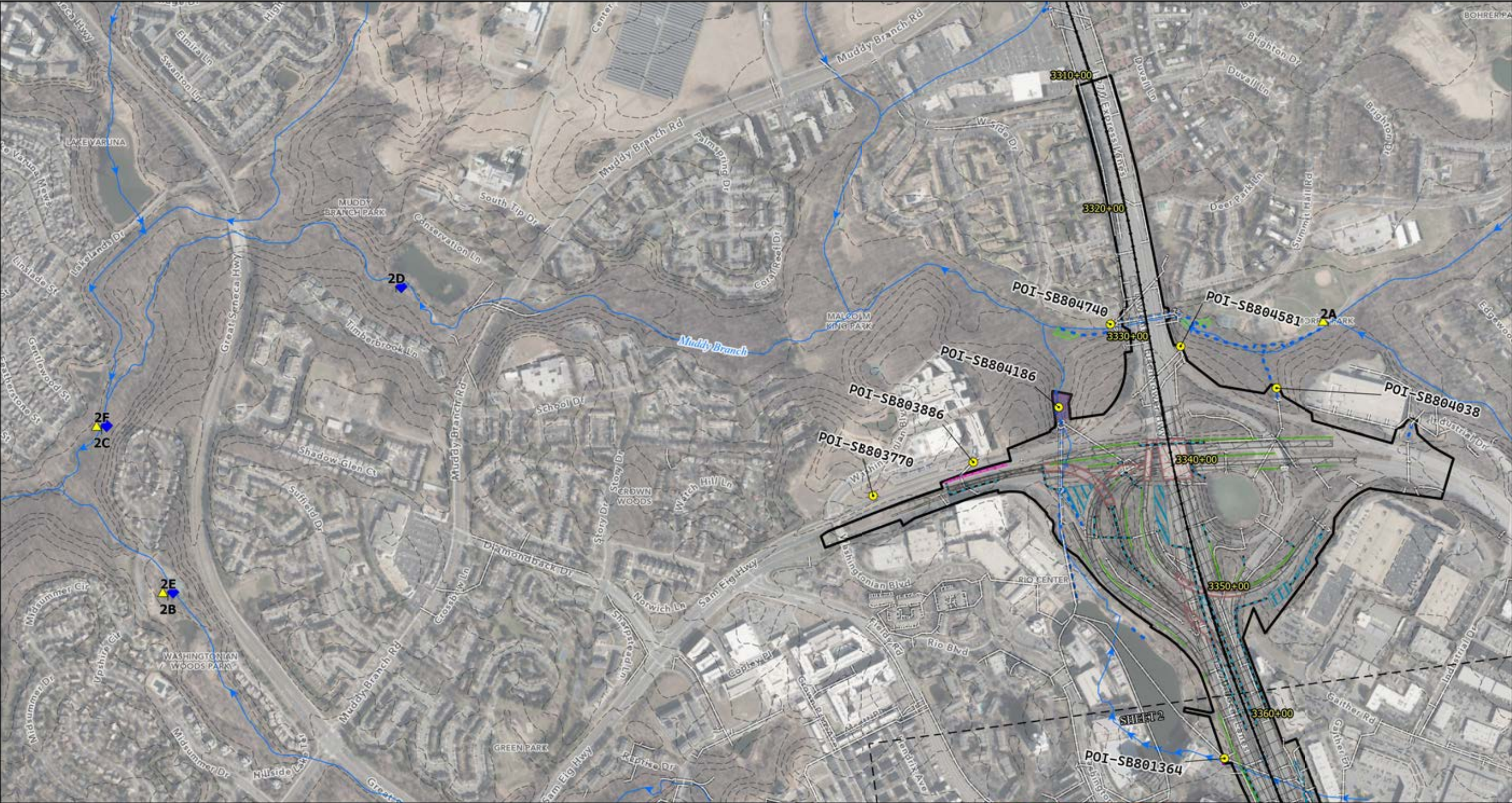


APPENDIX D1

POTENTIAL DISCHARGE LOCATION MAP FOR PHASE 1 SOUTH LOD



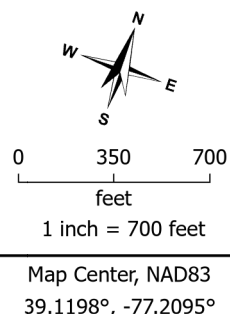
**I-495/I-270 Managed Lane Study
Phase 1 South
Water Quality Certification**

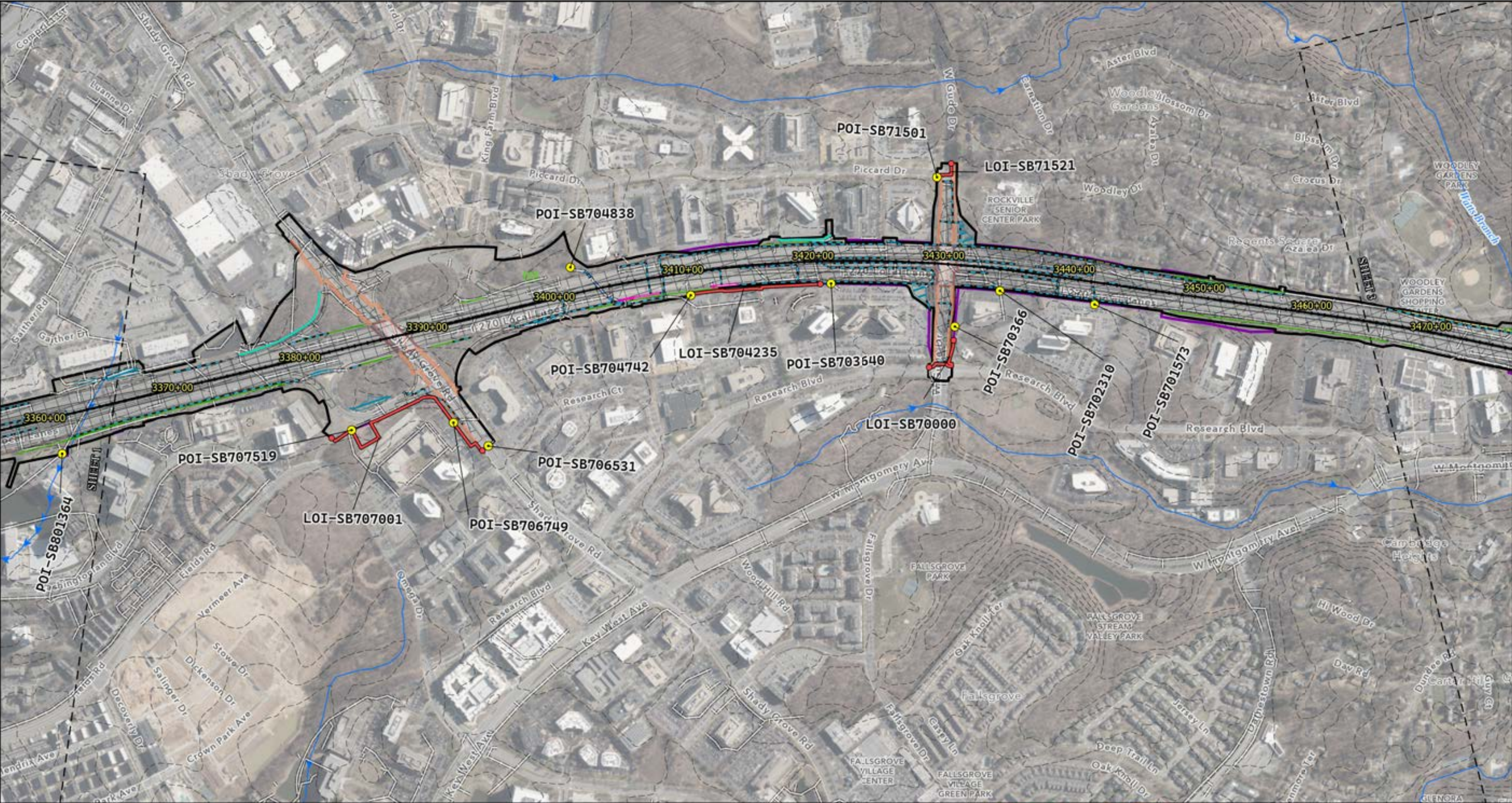
Appendix D1:
**Potential Discharge Location Map for
Phase 1 South LOD**

Sheet 1 of 12

Maryland
June 2022

Sheet Boundary	Stream Monitoring Site	Existing Structures	Proposed Structures	Proposed SWM
NHD/MDE Mapped Stream Flow	MCDEP	SWM Structure	Sidewalk/Shared Use Path	Storm Pipe
10' Contour	NWQMC	Noise Barrier	Noise Barrier	Culvert and Headwall
Discharge Locations	MESS	Drainage	Retaining Wall	Relocated Channel
POI	MNCPPC	FEIS Limits	Paved Area	Pond
LOI	Delineated Features	Limits of Stabilization	Aerial	Swale
Limit of Disturbance	Stream	Limits of Restoration		Vault
Temporary Impact	Wetland	Limits of Improved SWM		
Permanent Impact				





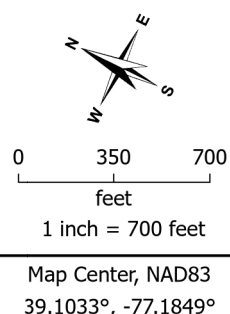
**I-495/I-270 Managed Lane Study
Phase 1 South
Water Quality Certification**

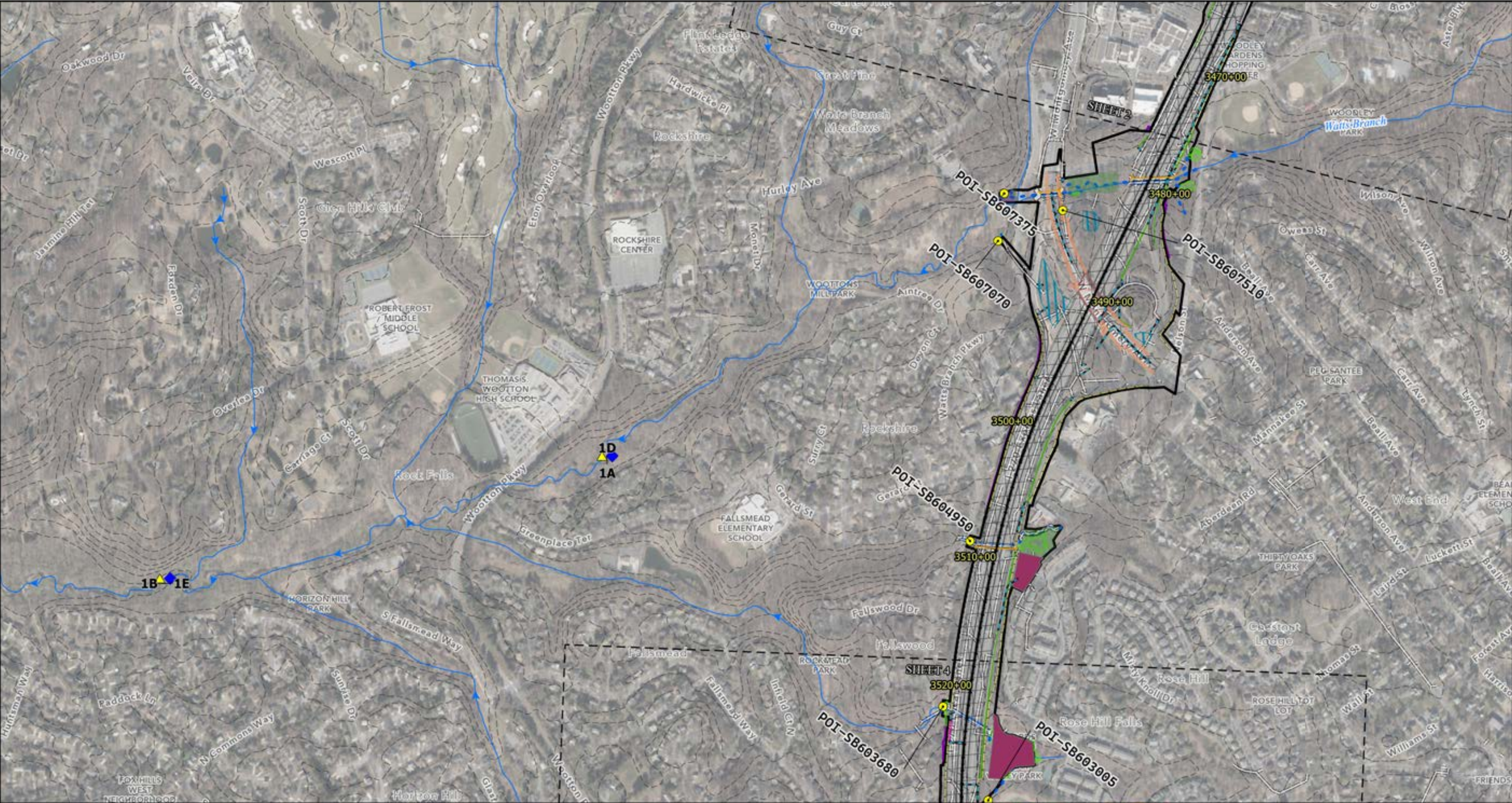
Appendix D1:
**Potential Discharge Location Map for
Phase 1 South LOD**

Sheet 2 of 12

Maryland
June 2022

Sheet Boundary	Stream Monitoring Site	Existing Structures	Proposed Structures	Proposed SWM
NHD/MDE Mapped Stream Flow	MCDEP	SWM Structure	Sidewalk/Shared Use Path	Storm Pipe
10' Contour	NWQMC	Noise Barrier	Noise Barrier	Culvert and Headwall
Discharge Locations	MESS	Drainage	Retaining Wall	Relocated Channel
POI	MNCPPC	FEIS Limits	Paved Area	Pond
LOI	Delineated Features	Limits of Stabilization	Aerial	Swale
Limit of Disturbance	Stream	Limits of Restoration		Vault
Temporary Impact	Wetland	Limits of Improved SWM		
Permanent Impact				





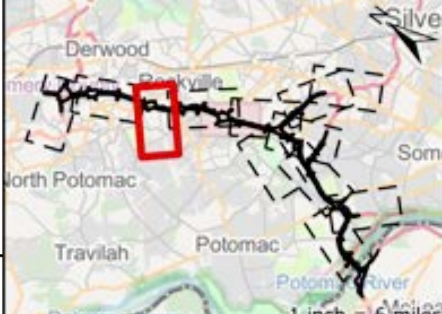
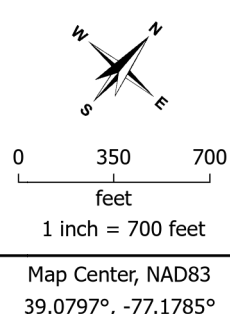
**I-495/I-270 Managed Lane Study
Phase 1 South
Water Quality Certification**

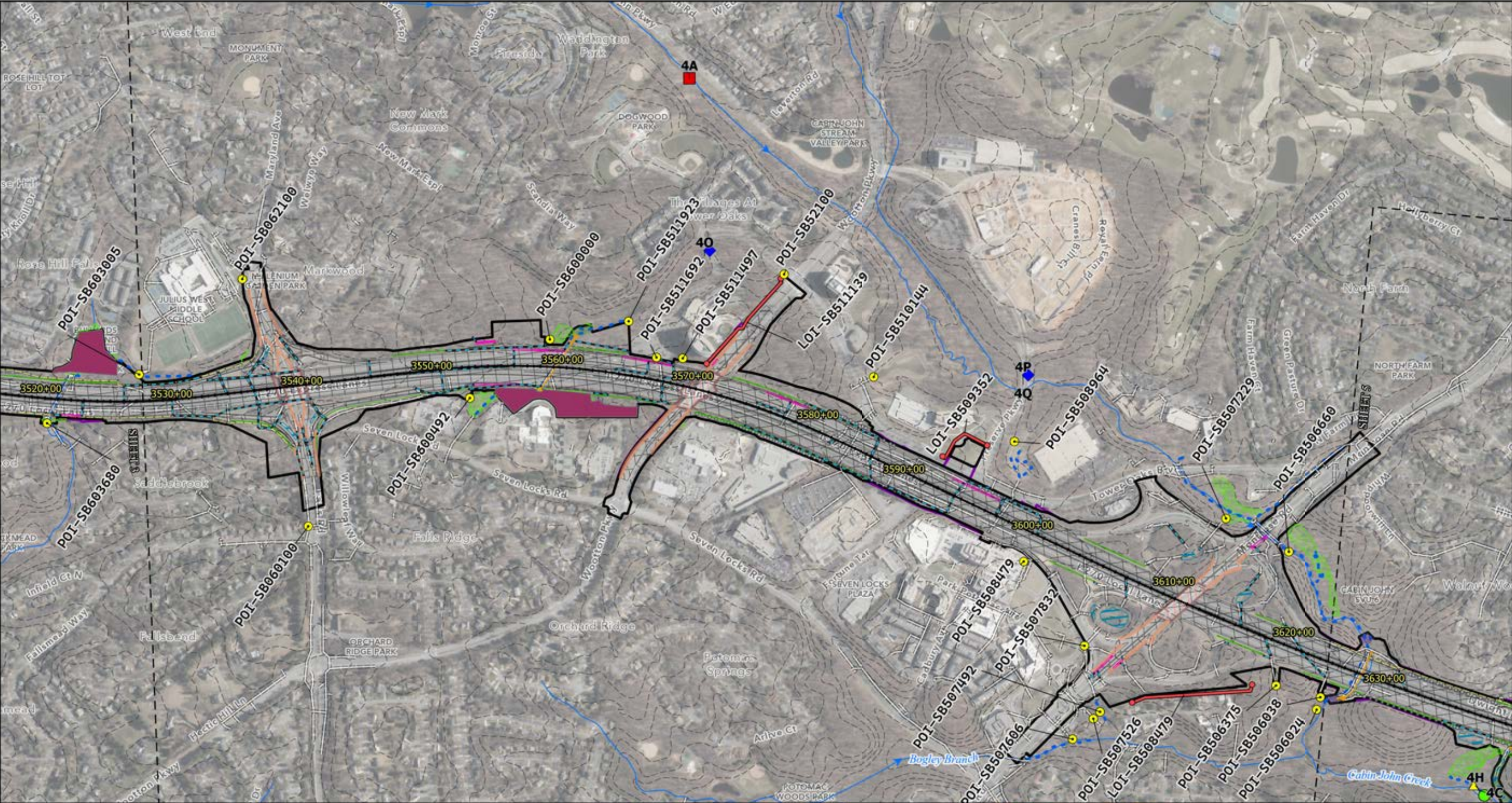
Appendix D1:
**Potential Discharge Location Map for
Phase 1 South LOD**

Sheet 3 of 12

Maryland
June 2022

Sheet Boundary	Stream Monitoring Site	Existing Structures	Proposed Structures	Proposed SWM
NHD/MDE Mapped Stream Flow	MCDEP	SWM Structure	Sidewalk/Shared Use Path	Storm Pipe
10' Contour	NWQMC	Noise Barrier	Noise Barrier	Culvert and Headwall
Discharge Locations	MESS	Drainage	Retaining Wall	Relocated Channel
POI	MNCPPC	FEIS Limits	Paved Area	Pond
LOI	Delineated Features	Limits of Stabilization	Aerial	Swale
Limit of Disturbance	Stream	Limits of Restoration		Vault
Temporary Impact	Wetland	Limits of Improved SWM		
Permanent Impact				





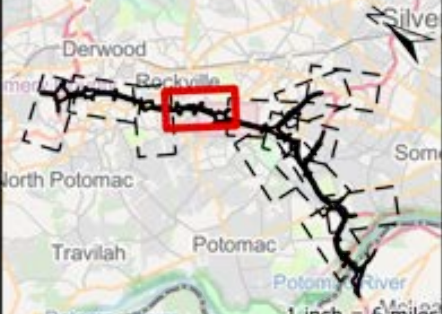
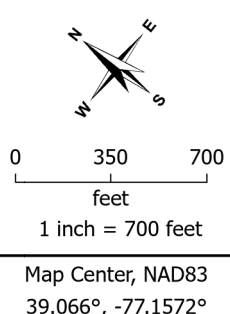
**I-495/I-270 Managed Lane Study
Phase 1 South
Water Quality Certification**

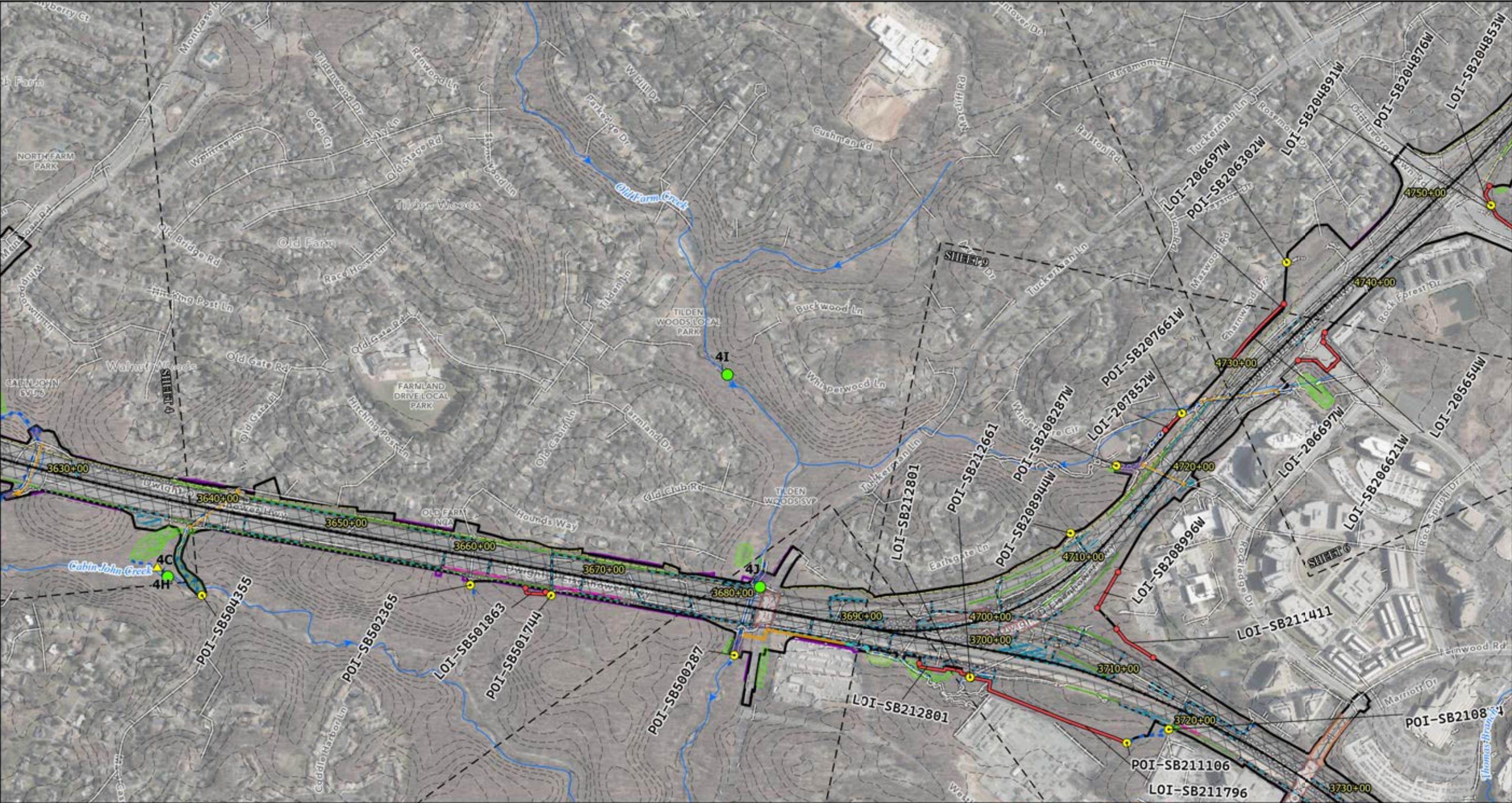
Appendix D1:
**Potential Discharge Location Map for
Phase 1 South LOD**

Sheet 4 of 12

Maryland
June 2022

<div><div><div></div><div>Sheet Boundary</div></div><div><div><div></div><div>NHD/MDE Mapped Stream Flow</div></div><div><div><div></div><div>10' Contour</div></div></div><div><div><div><div></div><div>POI</div></div><div><div></div><div>LOI</div></div></div><div><div><div><div></div><div>Temporary Impact</div></div><div><div></div><div>Permanent Impact</div></div></div></div></div></div></div>	<div><div><div><div></div><div>MCDEP</div></div><div><div></div><div>NWQMC</div></div><div><div></div><div>MESS</div></div><div><div></div><div>MNCPPC</div></div></div><div><div><div><div></div><div>Stream</div></div><div><div></div><div>Wetland</div></div></div></div></div>	<div><div><div><div></div><div>SWM Structure</div></div><div><div></div><div>Noise Barrier</div></div><div><div></div><div>Drainage</div></div></div><div><div><div><div></div><div>Limits of Stabilization</div></div><div><div></div><div>Limits of Restoration</div></div><div><div></div><div>Limits of Improved SWM</div></div></div></div></div>	<div><div><div><div></div><div>Sidewalk/Shared Use Path</div></div><div><div></div><div>Noise Barrier</div></div><div><div></div><div>Retaining Wall</div></div><div><div></div><div>Paved Area</div></div><div><div></div><div>Aerial</div></div></div></div>	<div><div><div><div></div><div>Storm Pipe</div></div><div><div></div><div>Culvert and Headwall</div></div><div><div></div><div>Relocated Channel</div></div><div><div></div><div>Pond</div></div><div><div></div><div>Swale</div></div><div><div></div><div>Vault</div></div></div></div>
---	---	--	--	---





**I-495/I-270 Managed Lane Study
Phase 1 South
Water Quality Certification**

Appendix D1:
**Potential Discharge Location Map for
Phase 1 South LOD**

Sheet 5 of 12
Maryland
June 2022

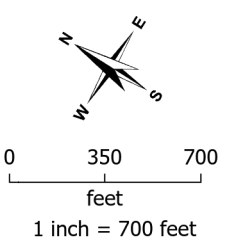
- Sheet Boundary
- NHD/MDE Mapped Stream Flow
- 10' Contour
- Discharge Locations
 - POI
 - LOI
- Limit of Disturbance
 - Temporary Impact
 - Permanent Impact

- Stream Monitoring Site
 - MCDEP
 - NWQMC
 - MESS
 - MNCPPC
- Delineated Features
 - Stream
 - Wetland

- Existing Structures
 - SWM Structure
 - Noise Barrier
 - Drainage
- FEIS Limits
 - Limits of Stabilization
 - Limits of Restoration
 - Limits of Improved SWM

- Proposed Structures
 - Sidewalk/Shared Use Path
 - Noise Barrier
 - Retaining Wall
 - Paved Area
 - Aerial

- Proposed SWM
 - Storm Pipe
 - Culvert and Headwall
 - Relocated Channel
 - Pond
 - Swale
 - Vault



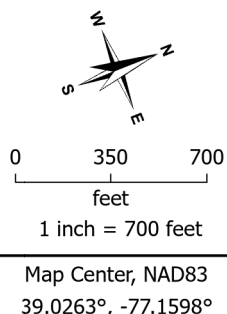


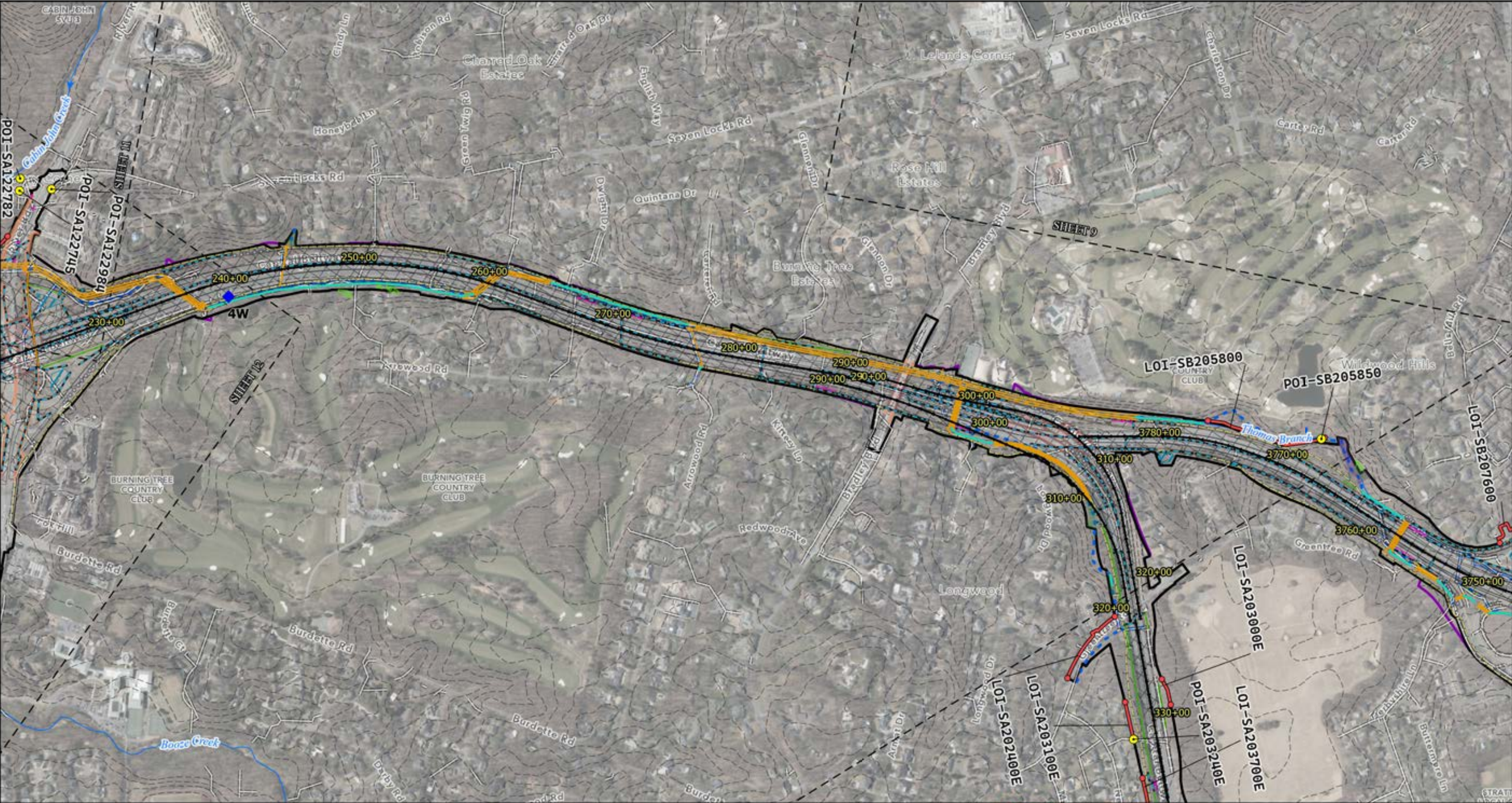
**I-495/I-270 Managed Lane Study
Phase 1 South
Water Quality Certification**

Appendix D1:
**Potential Discharge Location Map for
Phase 1 South LOD**

Sheet 9 of 12
Maryland
June 2022

Sheet Boundary	Stream Monitoring Site	Existing Structures	Proposed Structures	Proposed SWM
NHD/MDE Mapped Stream Flow	MCDEP	SWM Structure	Sidewalk/Shared Use Path	Storm Pipe
10' Contour	NWQMC	Noise Barrier	Noise Barrier	Culvert and Headwall
Discharge Locations	MESS	Drainage	Retaining Wall	Relocated Channel
POI	MNCPPC	FEIS Limits	Paved Area	Pond
LOI	Delineated Features	Limits of Stabilization	Aerial	Swale
Limit of Disturbance	Stream	Limits of Restoration		Vault
Temporary Impact	Wetland	Limits of Improved SWM		
Permanent Impact				



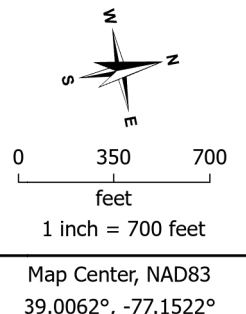


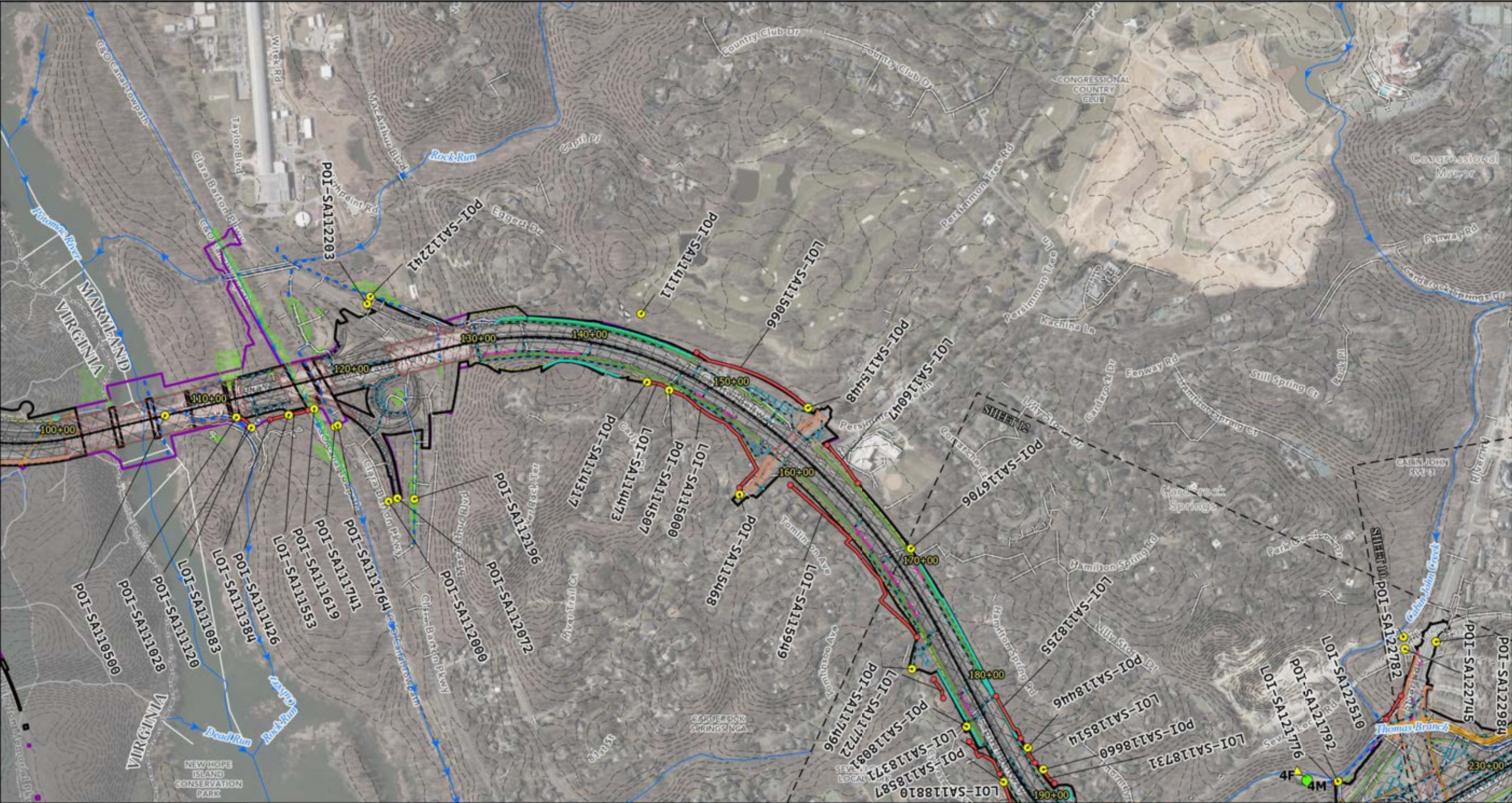
**I-495/I-270 Managed Lane Study
Phase 1 South
Water Quality Certification**

Appendix D1:
**Potential Discharge Location Map for
Phase 1 South LOD**

Sheet 10 of 12
Maryland
June 2022

Sheet Boundary	Stream Monitoring Site	Existing Structures	Proposed Structures	Proposed SWM
NHD/MDE Mapped Stream Flow	MCDEP	SWM Structure	Sidewalk/Shared Use Path	Storm Pipe
10' Contour	NWQMC	Noise Barrier	Noise Barrier	Culvert and Headwall
Discharge Locations	MESS	Drainage	Retaining Wall	Relocated Channel
POI	MNCPPC	FEIS Limits	Paved Area	Pond
LOI	Delineated Features	Limits of Stabilization	Aerial	Swale
Limit of Disturbance	Stream	Limits of Restoration		Vault
Temporary Impact	Wetland	Limits of Improved SWM		
Permanent Impact				





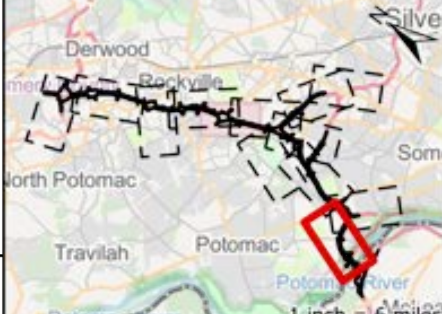
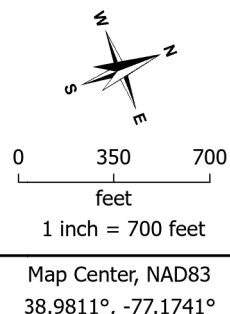
**I-495/I-270 Managed Lane Study
Phase 1 South
Water Quality Certification**

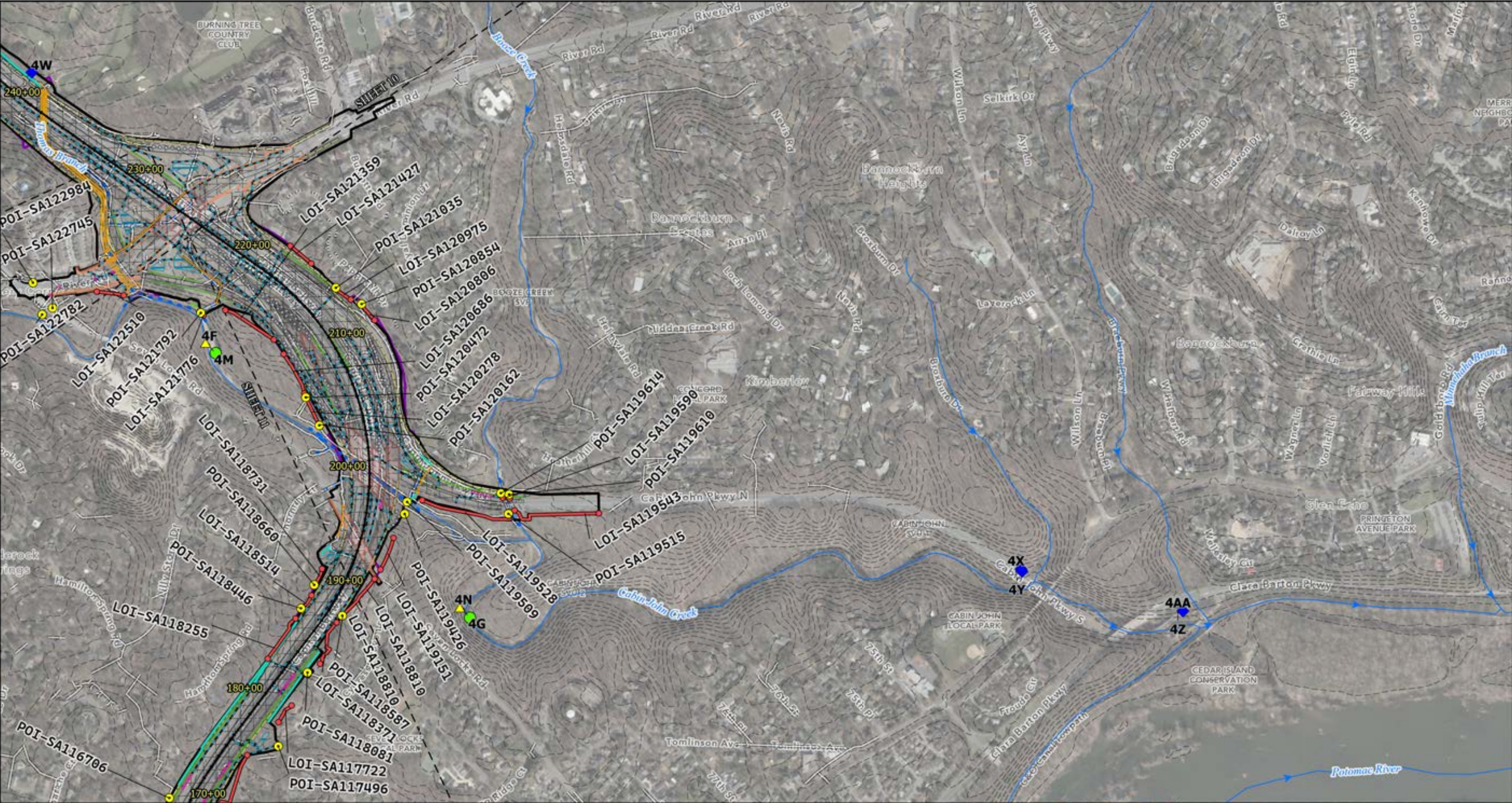
Appendix D1:
**Potential Discharge Location Map for
Phase 1 South LOD**

Sheet 11 of 12

Maryland
June 2022

Sheet Boundary	Stream Monitoring Site	Existing Structures	Proposed Structures	Proposed SWM
NHD/MDE Mapped Stream Flow	MCDEP	SWM Structure	Sidewalk/Shared Use Path	Storm Pipe
10' Contour	NWQMC	Noise Barrier	Noise Barrier	Culvert and Headwall
Discharge Locations	MESS	Drainage	Retaining Wall	Relocated Channel
POI	MNCPPC	FEIS Limits	Paved Area	Pond
LOI	Delineated Features	Limits of Stabilization	Aerial	Swale
Limit of Disturbance	Stream	Limits of Restoration		Vault
Temporary Impact	Wetland	Limits of Improved SWM		
Permanent Impact				





**I-495/I-270 Managed Lane Study
Phase 1 South
Water Quality Certification**

Appendix D1:
**Potential Discharge Location Map for
Phase 1 South LOD**

Sheet 12 of 12
Maryland
June 2022

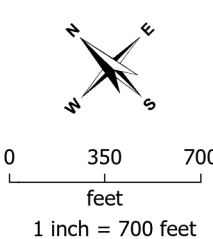
- Sheet Boundary
- NHD/MDE Mapped Stream Flow
- 10' Contour
- Discharge Locations
 - POI
 - LOI
- Limit of Disturbance
 - Temporary Impact
 - Permanent Impact

- Stream Monitoring Site
 - MCDEP
 - NWQMC
 - MESS
 - MNCPPC
- Delineated Features
 - Stream
 - Wetland

- Existing Structures
 - SWM Structure
 - Noise Barrier
 - Drainage
- FEIS Limits
 - Limits of Stabilization
 - Limits of Restoration
 - Limits of Improved SWM

- Proposed Structures
 - Sidewalk/Shared Use Path
 - Noise Barrier
 - Retaining Wall
 - Paved Area
 - Aerial

- Proposed SWM
 - Storm Pipe
 - Culvert and Headwall
 - Relocated Channel
 - Pond
 - Swale
 - Vault



Map Center, NAD83
38.9799°, -77.1503°

